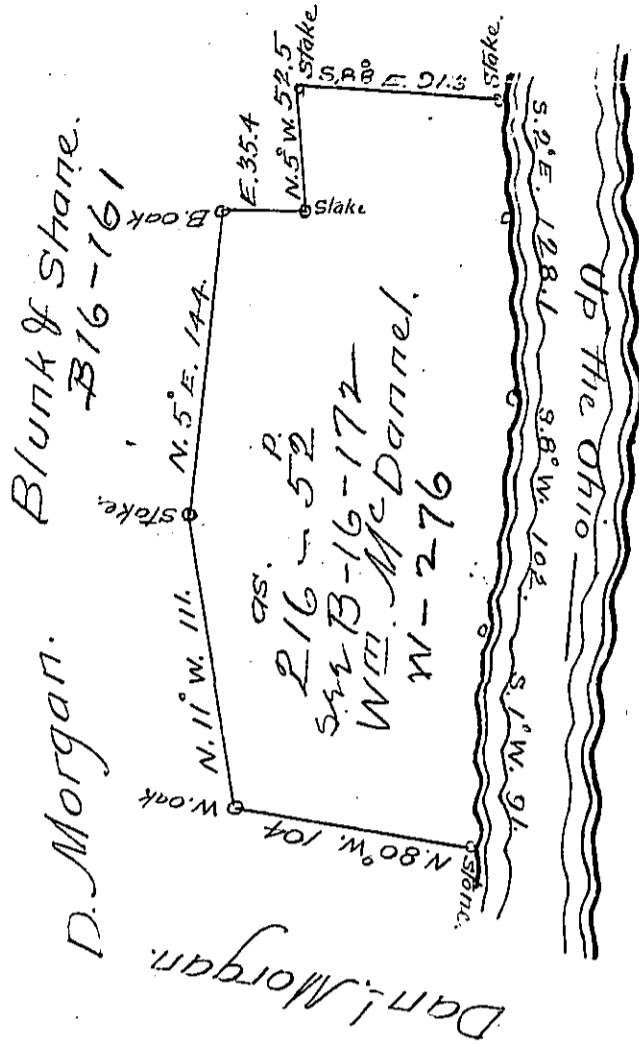


And McDonald

Conditional division.



The above represents a resurvey made the 28<sup>th</sup> day of April A.D. 1828 in pursuance of an order from the Board of Property dated March the 5<sup>th</sup> A.D. 1828 containing two hundred and sixteen acres fifty two perches and the allowance of six percent for Wm. McDannel formerly granted ~~formerly granted~~ to Thomas Smallman by the proprietary Government dated the 3<sup>d</sup> of April A.D. 1769 App. No. 618.

The above division line between William and Andrew McDannel was settled and confirm'd by an arbitration of men appointed by the Orphans Court of Washington County agreeable to the last will and testament of the late John McDannel Deceas'd whose decision was to be final as is above represented. The above is a copy of a survey made by my predecessor Henry Davis as entered in the Official Survey Book

Jacob Spangler Esq<sup>r</sup>.  
Surveyor General

John Bryan D.S.

IN TESTIMONY that the above is a copy of the original remaining on file in the Department of Internal Affairs of Pennsylvania, made conformably to an Act of Assembly approved the 16th day of February, 1833, I have hereunto set my Hand and caused the Seal of said Department to be affixed at Harrisburg, this SIXTH day of FEBRUARY 1906.

*George R. Brown*  
Secretary of Internal Affairs.